

# LKIF in Commercial Legal Practice: Transaction Configuration from Eurobonds to Copyright

JURIX 2013

Orlando Conetta and Burkhard Schafer

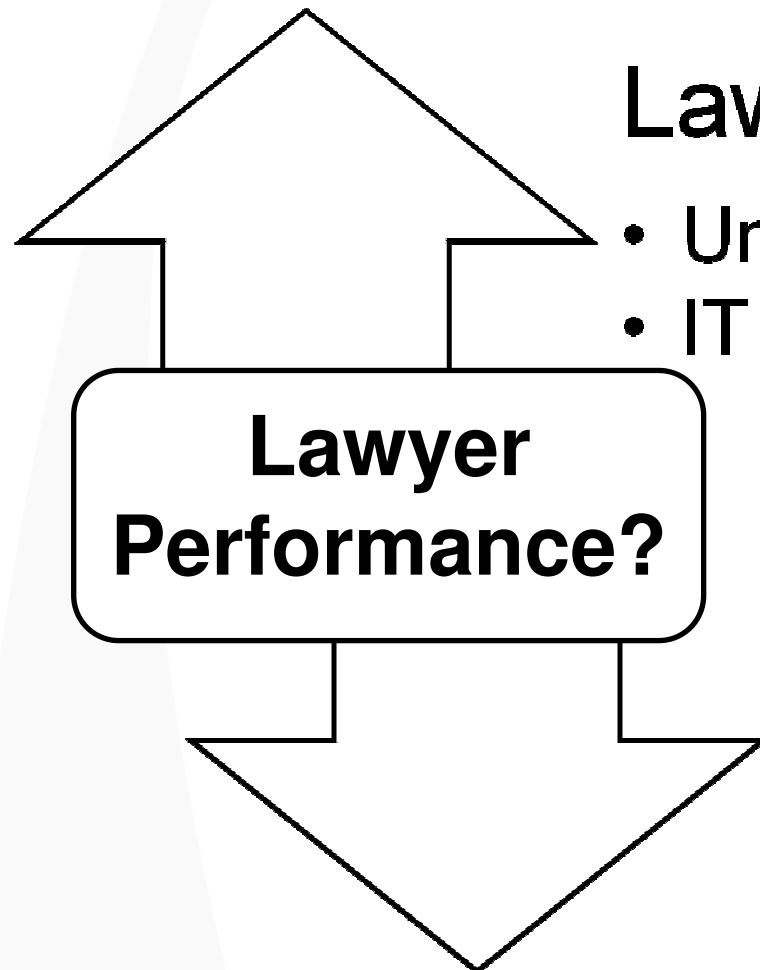


Pinsent Masons

# Introduction

- Background in both Law and Computer Science
- Pursued software engineering career in the legal industry
- I harboured ambition to grow legal knowledge engineering in commercial practice
- Was not going to happen. Why?

# Poor penetration



## Lawyers

- Unclear value proposition
- IT Challenges (workflow)

**Lawyer  
Performance?**

## Legal AI Research

- Practitioner dialogue
- Scale of the task

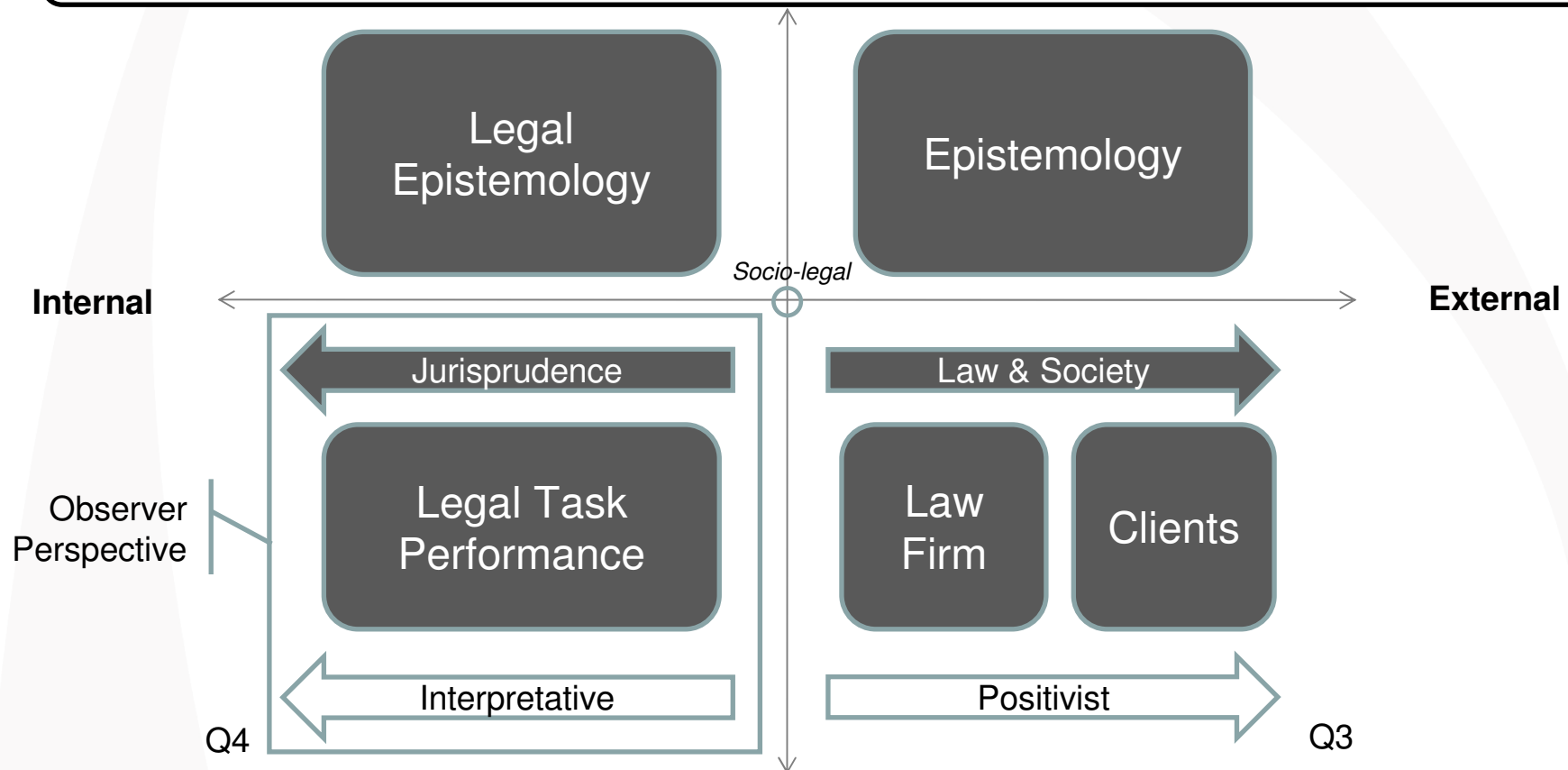
# Methodology

- Use CommonKADS to perform feasibility study (OM-1, OM-2)
- Apply LKIF and normative assessment as per Valente and Harness (OM-3, OM-4)
- Focused on commercial transactional law. Would not be applicable to litigation or disputes.



# Study Propositions

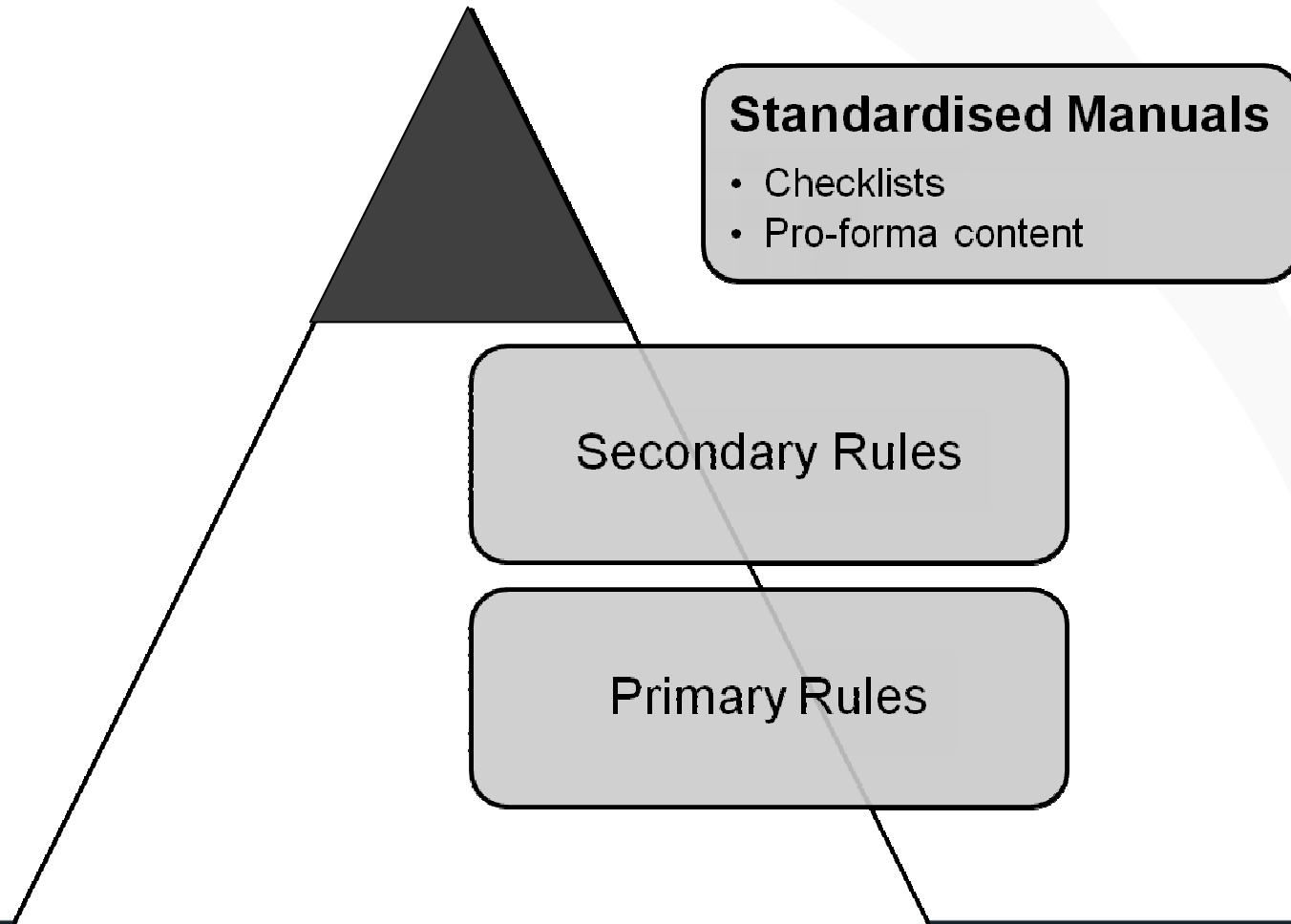
*3. LKIF would be able to describe the legal transaction*



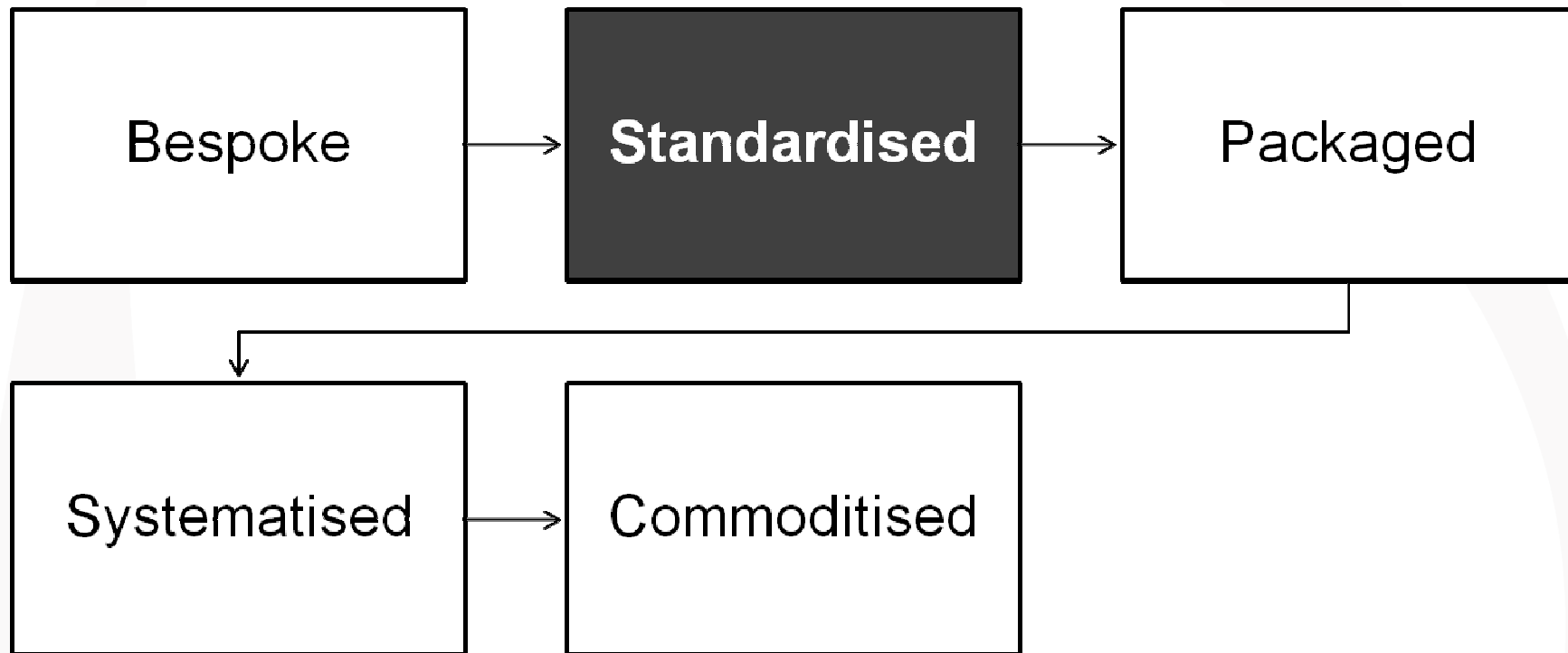
*1. No matter what - I will fail to persuade!*

*2 & 4. LKIF would need altering to perform identified task*

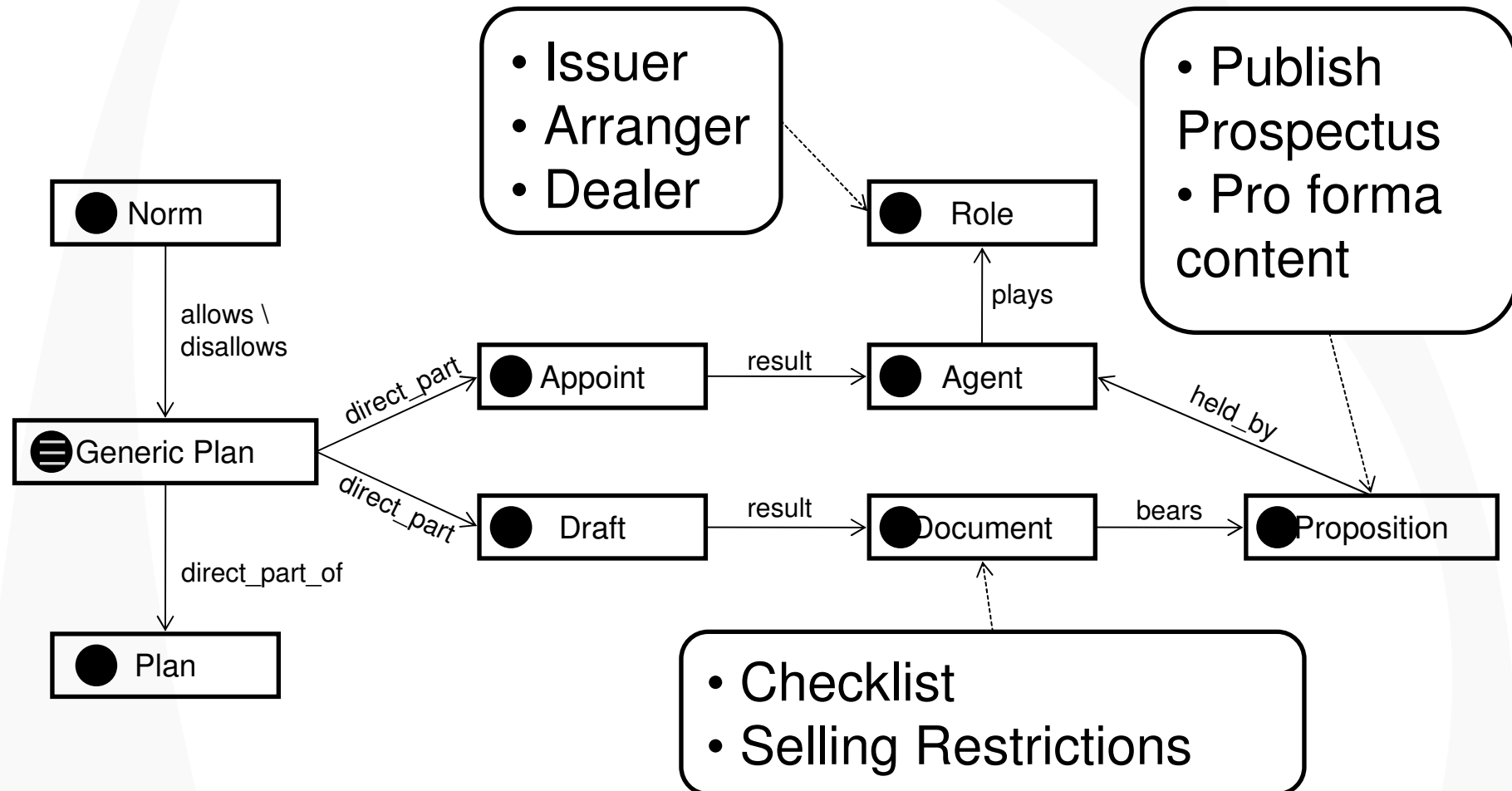
# Standardised Work Types



# Susskind: Legal Product Lifecycle



# LKIF applied to EMTN

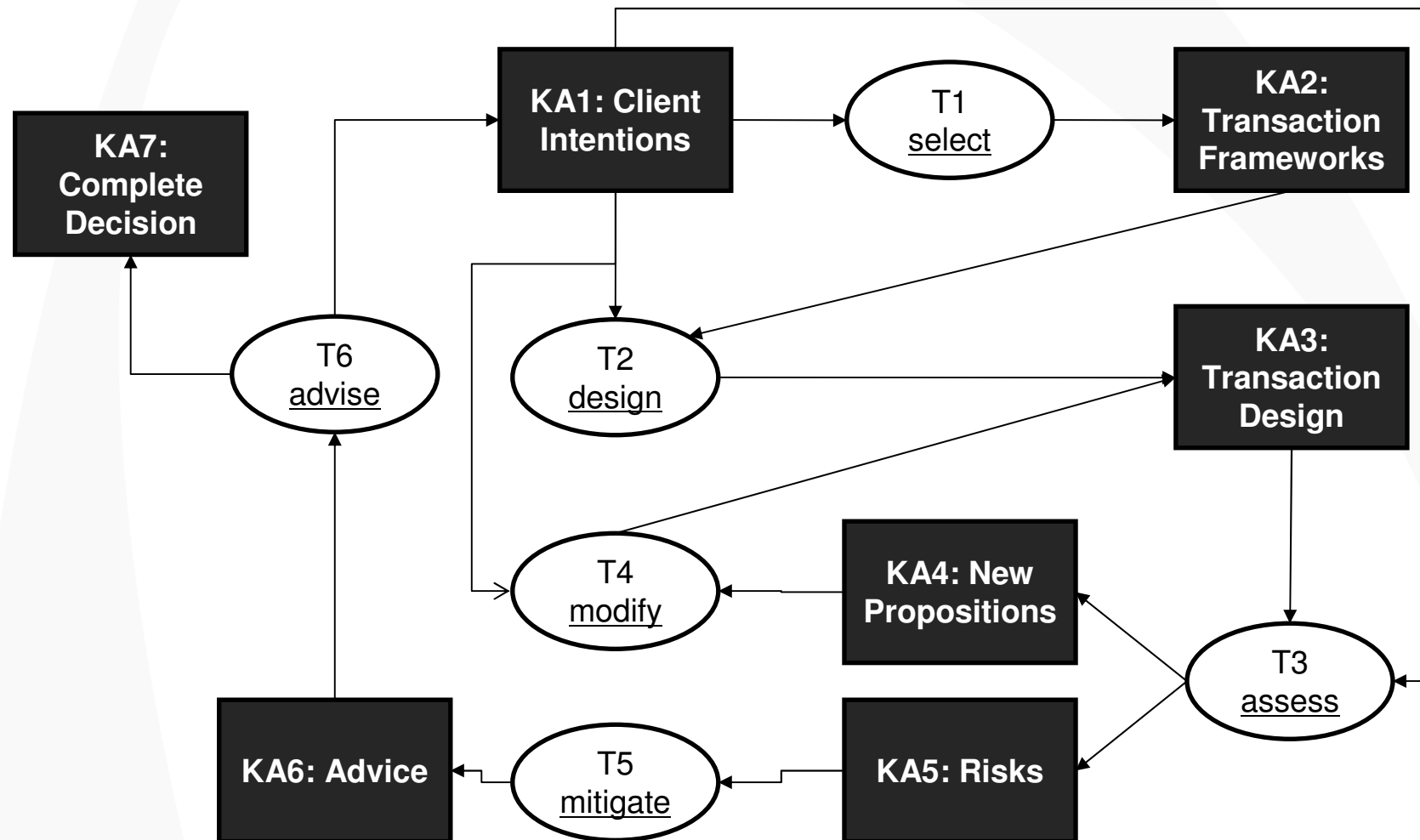




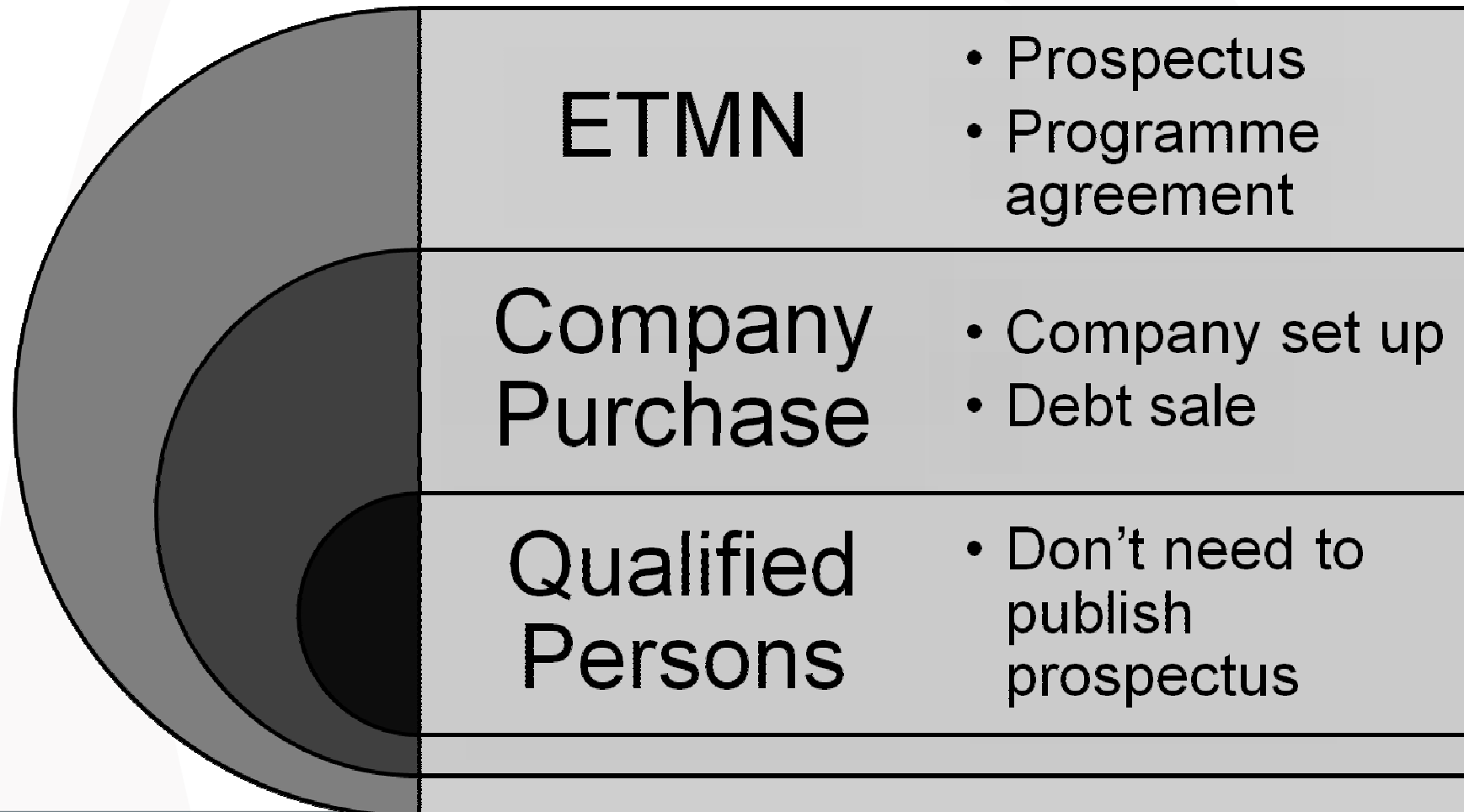
# Observations

- A transaction is not said to be allowed or disallowed. Deontic logic was not *directly* relevant.
- But, legal reasoning was relevant against standardised best practices - *lex specialis*.
- Circumstances could change at any point in transaction.
- Performance most similar to the CommonKADS 'Propose and Revise' task template.

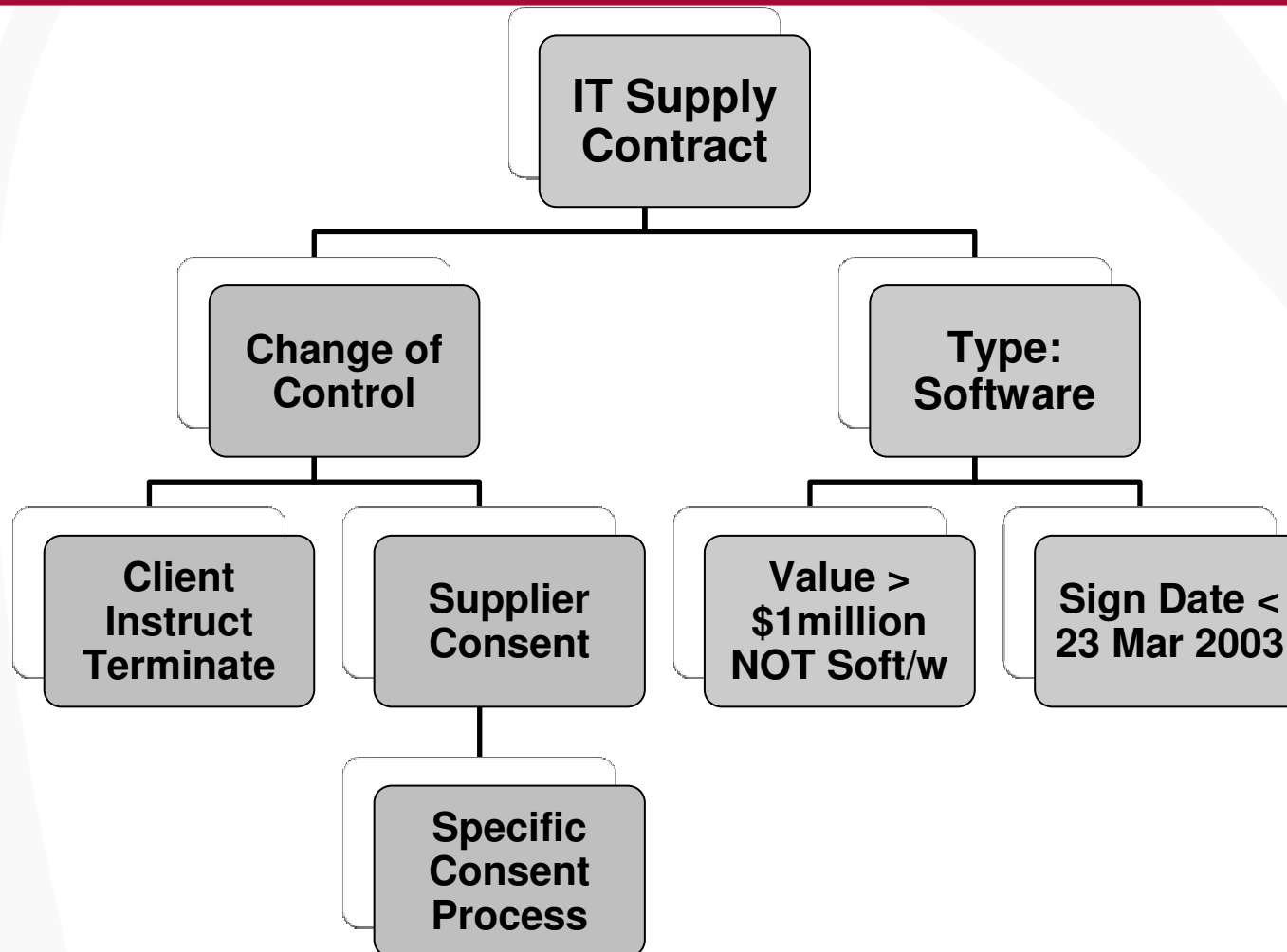
# Task Model: Transaction Configuration



# Transaction Plans – Lex Specialis



# Transaction Plans – further example



# Future work

- More empirical work required
  - Across different transaction types
  - Is there a 'Dispute Configuration' task template?
  - How should we represent risk across generic plans?
- SCRIPT - Copyright
  - Apply Argumentation Schemes
  - Pre-agreement intentions
  - Post-agreement disputes



## Pinsent Masons

Pinsent Masons LLP is a limited liability partnership registered in England & Wales (registered number: OC333653) authorised and regulated by the Solicitors Regulation Authority, and by the appropriate regulatory body in the other jurisdictions in which it operates. The word 'partner', used in relation to the LLP, refers to a member of the LLP or an employee or consultant of the LLP or any affiliated firm of equivalent standing. A list of the members of the LLP, and of those non-members who are designated as partners, is displayed at the LLP's registered office: 30 Crown Place, London EC2A 4ES, United Kingdom. We use 'Pinsent Masons' to refer to Pinsent Masons LLP, its subsidiaries and any affiliates which it or its partners operate as separate businesses for regulatory or other reasons. Reference to 'Pinsent Masons' is to Pinsent Masons LLP and/or one or more of those subsidiaries or affiliates as the context requires. © Pinsent Masons LLP 2013

For a full list of our locations around the globe please visit our websites:



[www.pinsentmasons.com](http://www.pinsentmasons.com)



[www.Out-Law.com](http://www.Out-Law.com)